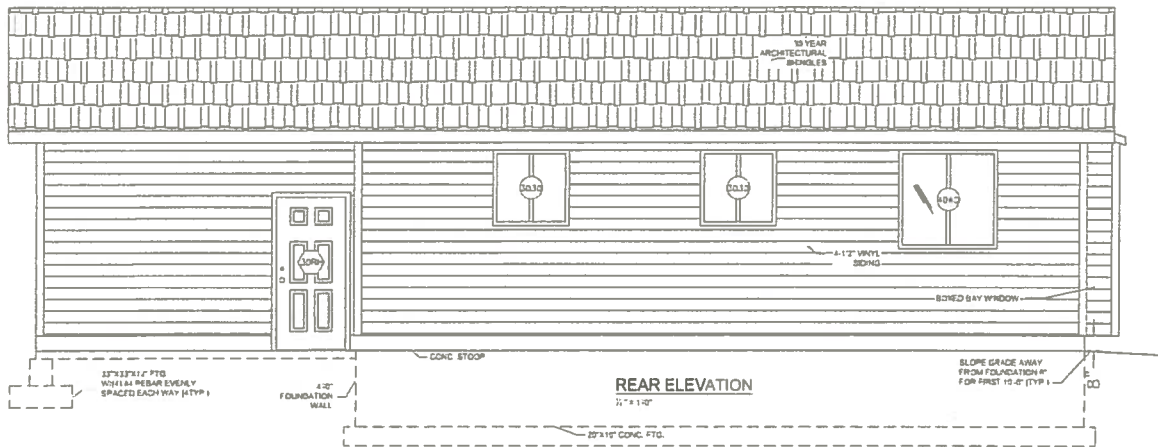


RIGHT ELEVATION
 1/2" = 1'-0"



18 YEAR
ARCHITECTURAL
SHINGLES

0030

0030

0030

4-12" VENT
SOUND

BAY WINDOW

CONC STOOP

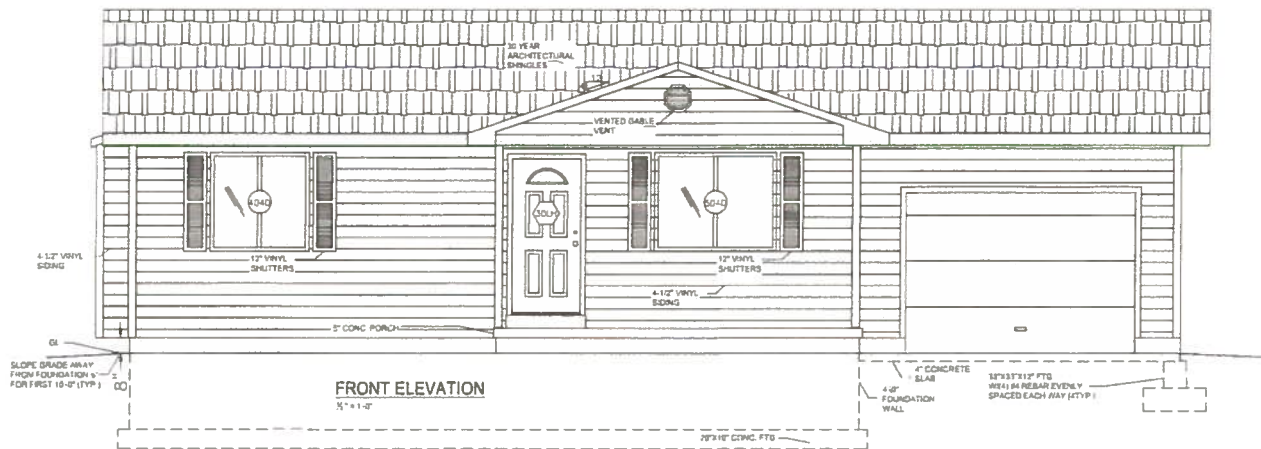
12" x 12" x 8" PTS
WHEN REAR ELEVARY
SPACED EACH WAY (TYP)

4-12"
FOUNDATION
WALL

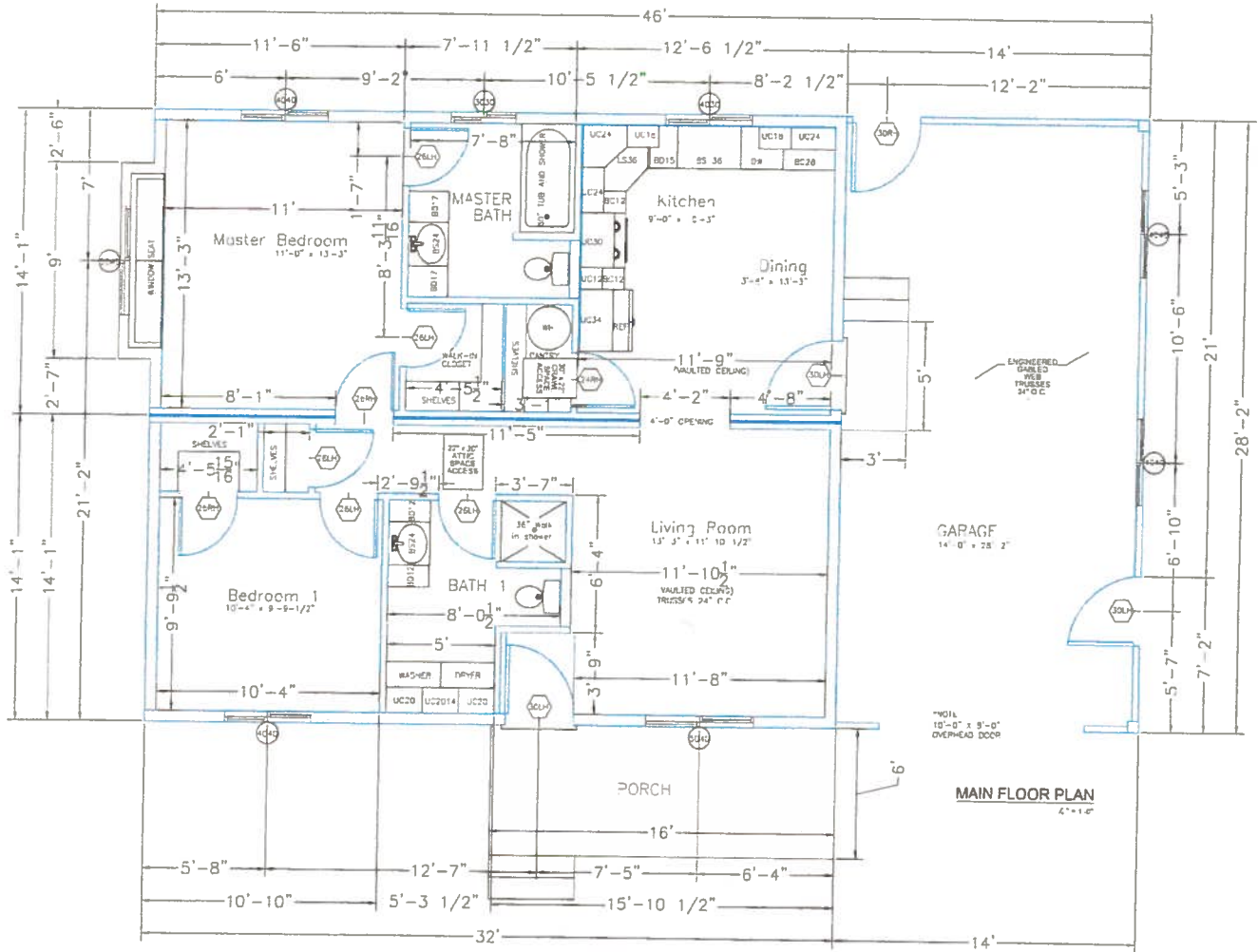
REAR ELEVATION
1/2" = 1'-0"

SLOPE GRADE AWAY
FROM FOUNDATION 4"
FOR FIRST 10'-0" (TYP)

12" x 12" CONC. FTG.



FRONT ELEVATION
 $\frac{1}{8}'' = 1'-0''$

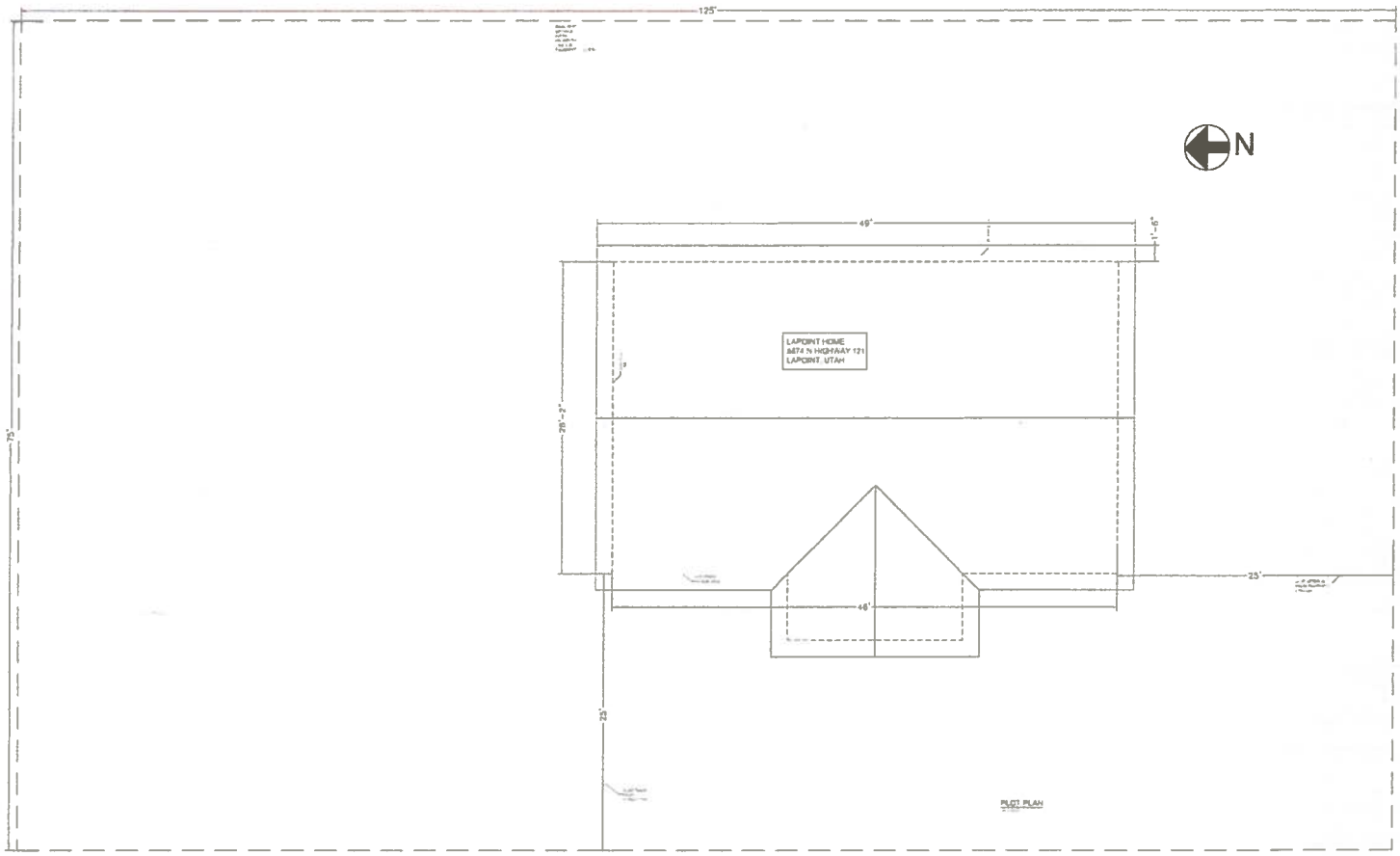


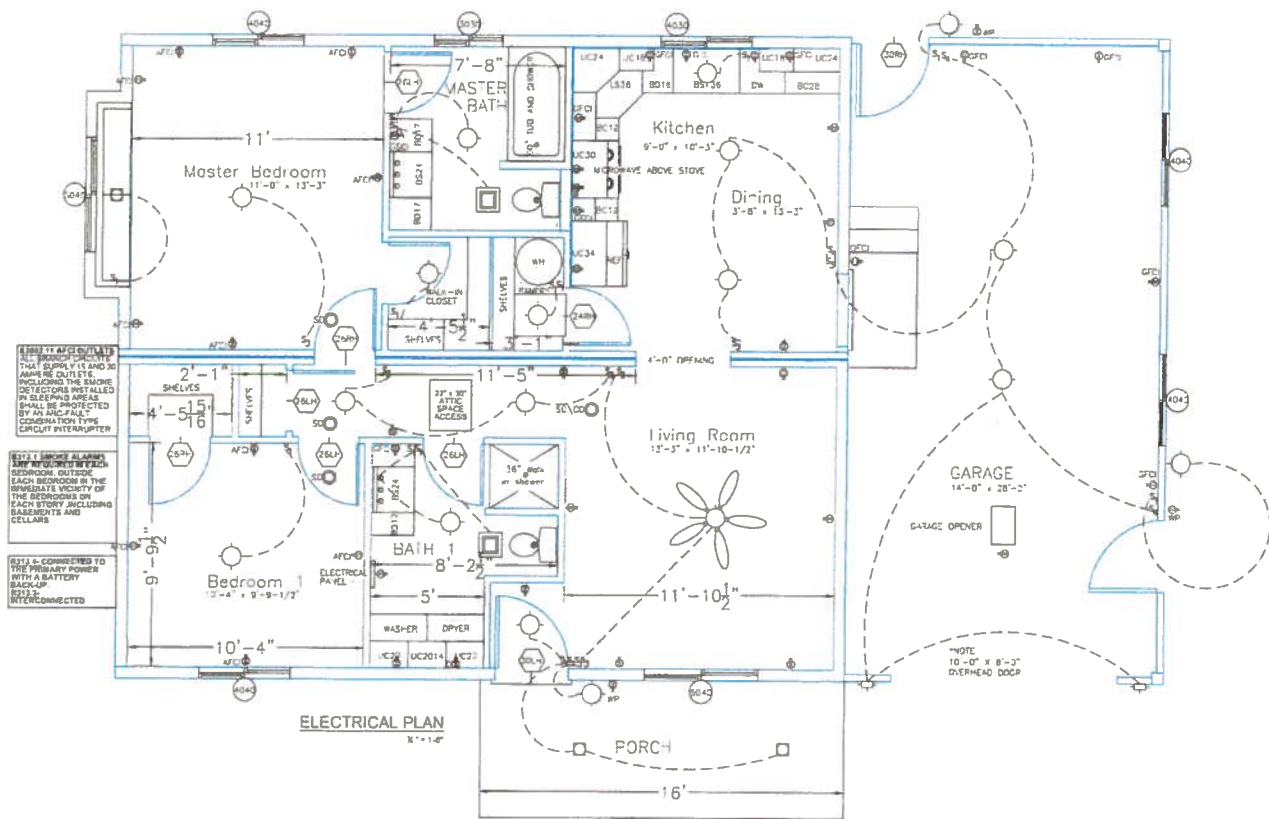
ENGINEERED GABLED WITH STEEL TRUSSES 24" O.C.

GARAGE
14'-0" x 25'-2"

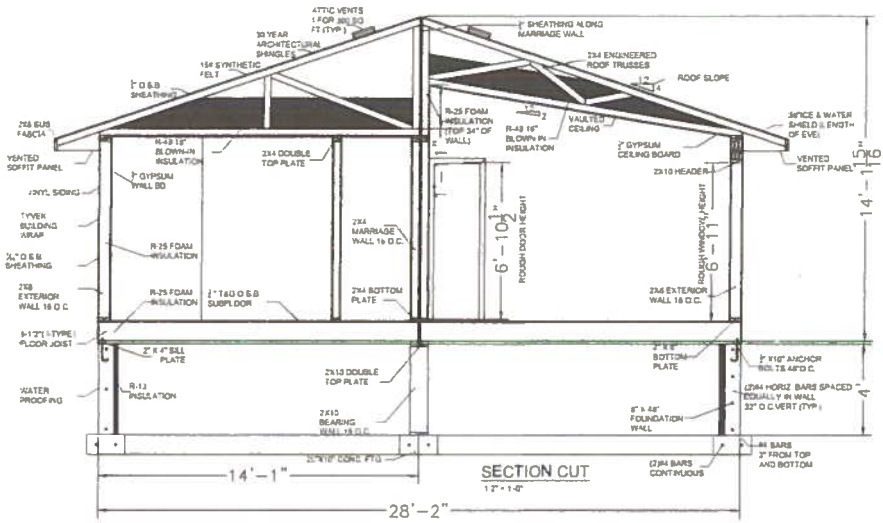
10'-0" x 9'-0"
OVERHEAD DOOR

MAIN FLOOR PLAN
1/2" = 1'-0"





ELECTRICAL PLAN
8' x 16'



SECTION CUT
12'-14"



STRUCTURAL ONLY

